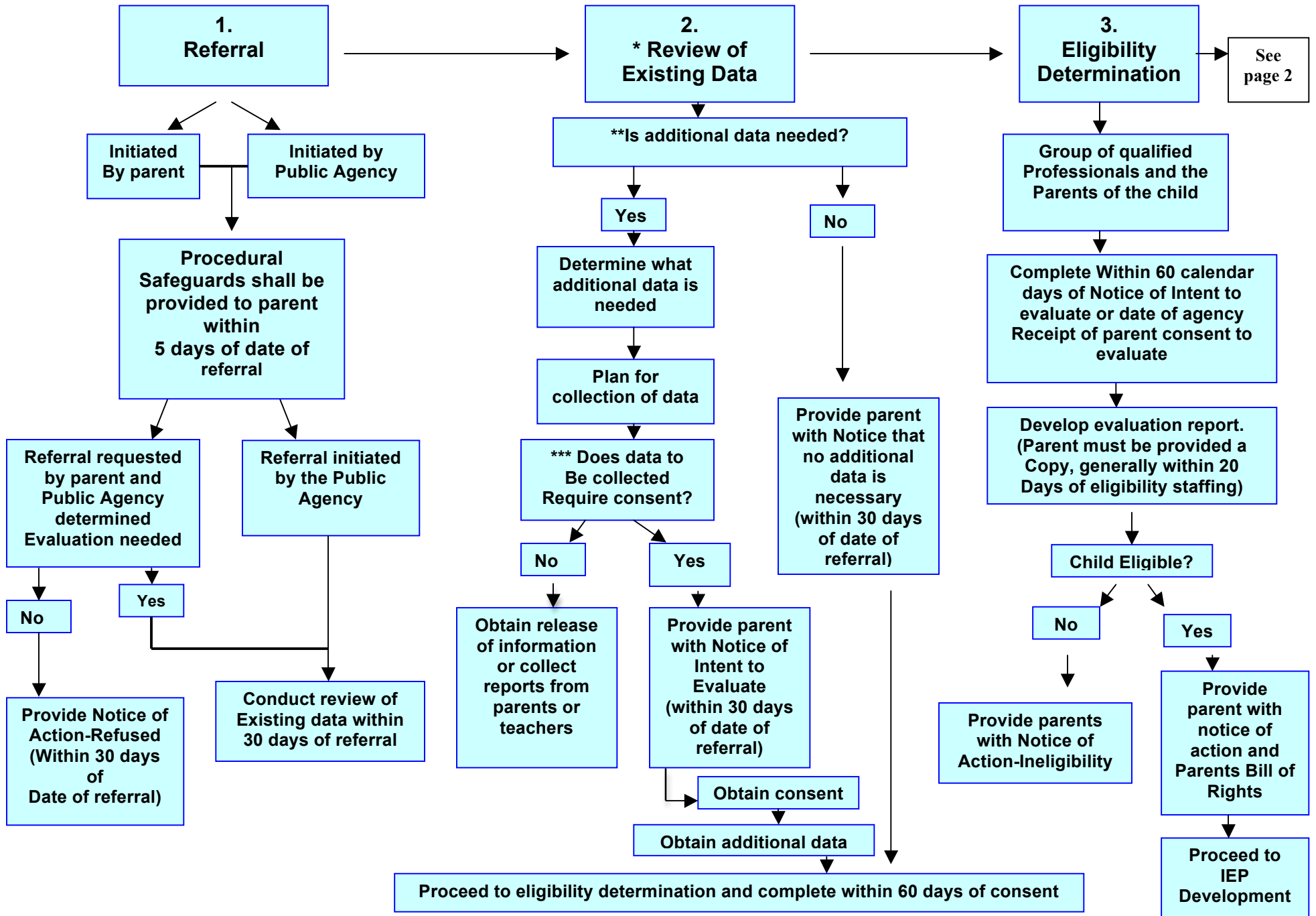
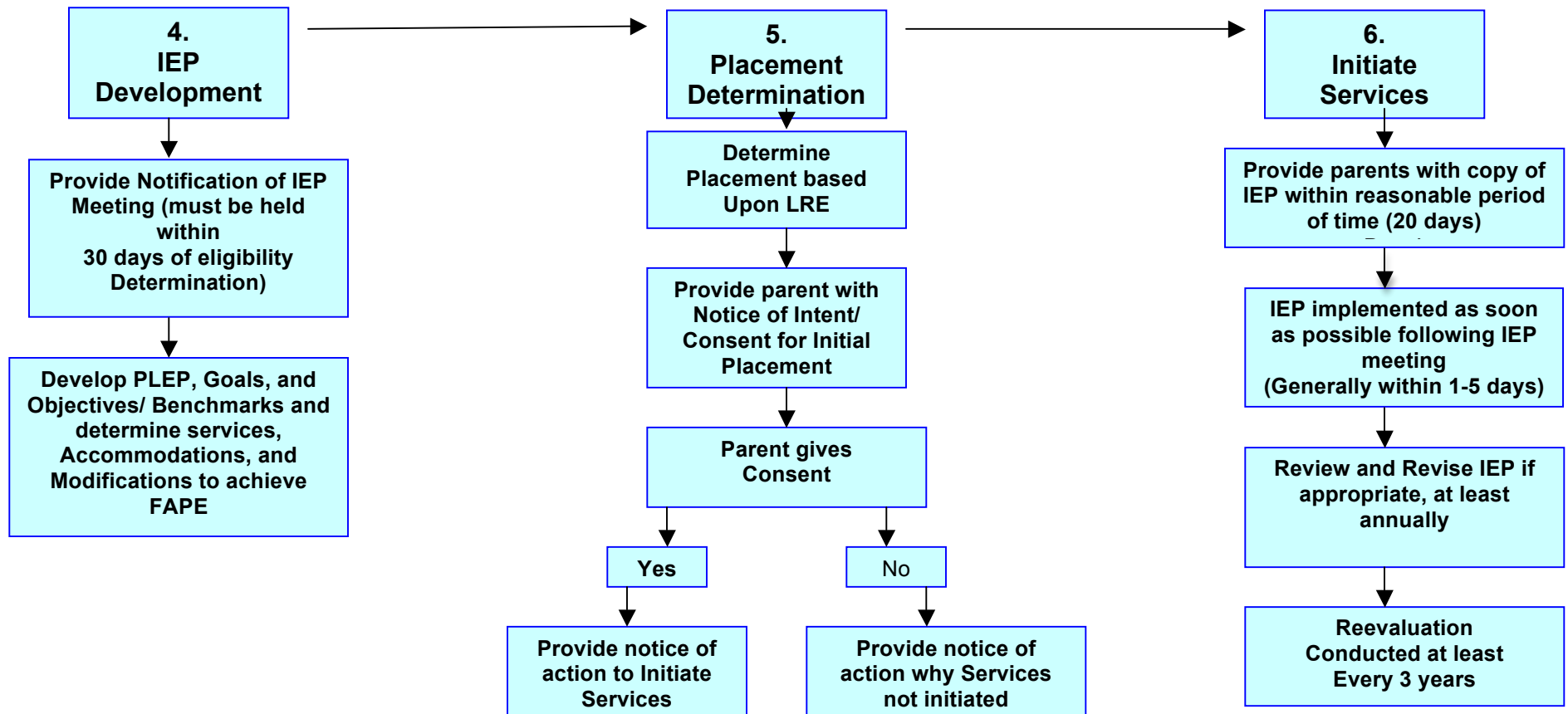


Special Education Process





***This review is conducted by a group composed of the required participants of an IEP team and other qualified professionals, as appropriate. The review may be conducted without a meeting.**

**** TO DETERMINE:**

- 1. Whether the child has or continues to have a disability.**
- 2. The present levels of performance and education needs of the child.**
- 3. Whether the child needs or continues to need special education and Related services.**
- 4. Whether any additions or modifications to the special education and related services are needed to enable the child to meet the measurable annual goals set out in the IEP and to participate, as appropriate, in the general curriculum.**

***** The district is not required to obtain parental consent for teacher or related service provider observations, ongoing classroom evaluation, or the administration of or review of the results of adapted or modified assessments that are administered to all children in a class, grade, or school.**